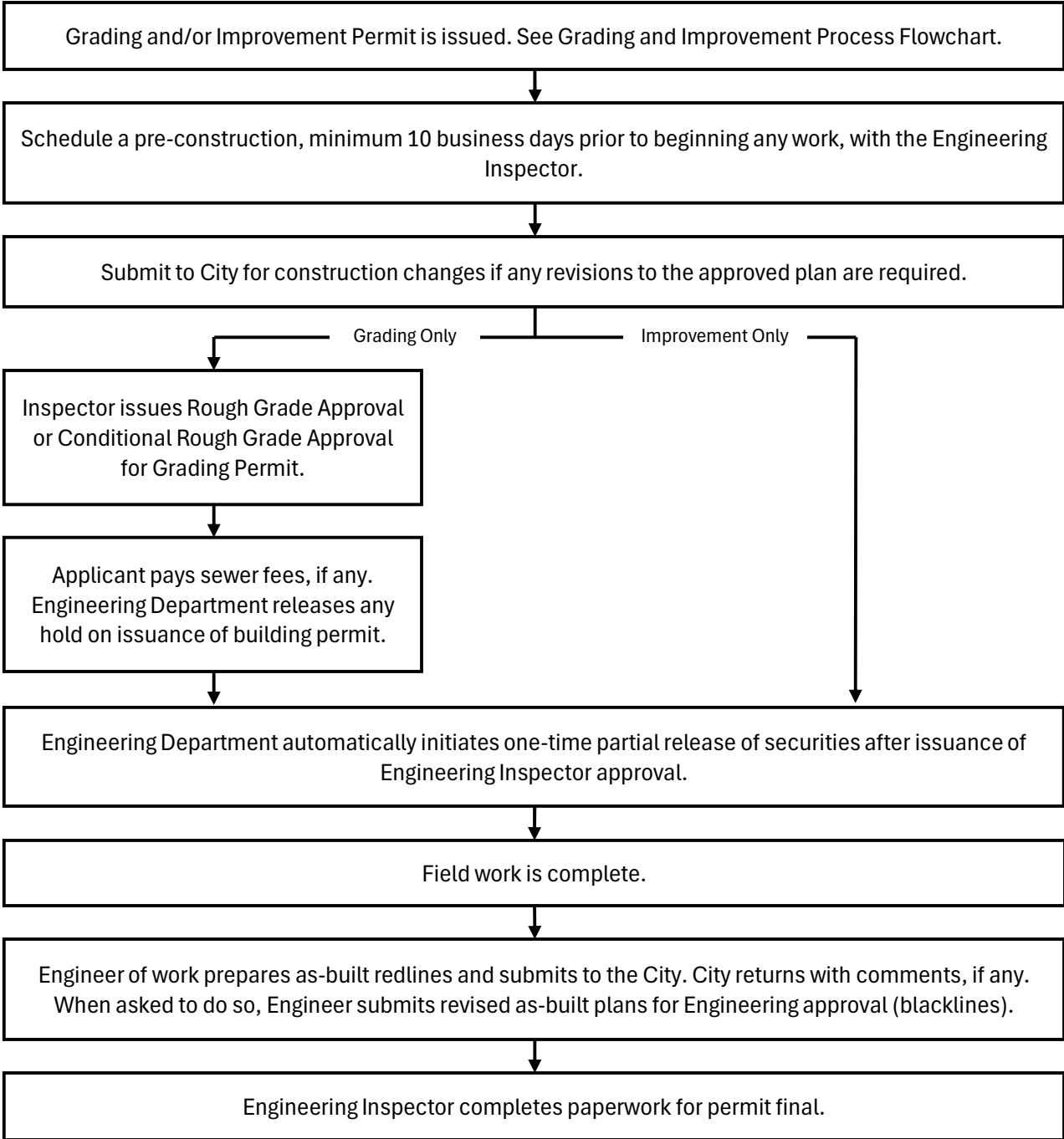
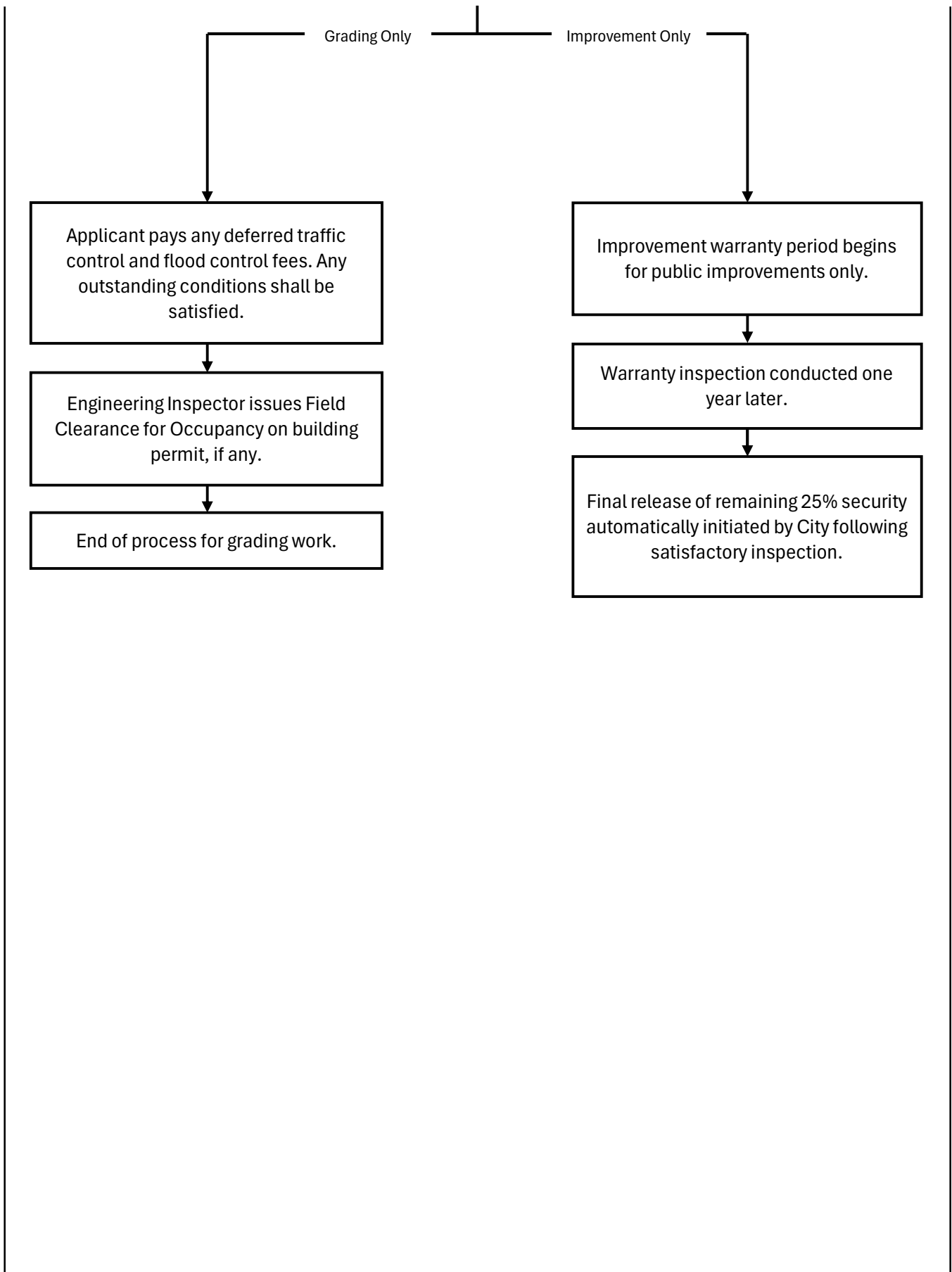




City of Encinitas
Engineering Department
505 S. Vulcan Ave, Encinitas, CA 92024
760-633-2706
developmenteng@encinitasca.gov
www.encinitasca.gov

CONSTRUCTION PHASE FLOWCHART





Construction Phase Flowchart

Frequently Asked Questions:**When is Rough Grade Approval (RGA) issued?**

At such time as the Engineering Inspector determines that the project is nearing an acceptable level for RGA, the Engineering Inspector may issue a punch list to the applicant listing which remaining tasks must be executed prior to issuance of a RGA. These tasks typically include, at a minimum, a pad certification and as-graded soils report. The Engineering Inspector should be contacted for all questions relative to the punch list and the status of RGA. RGA will be required prior to building permit issuance.

Will RGA and Improvements be required prior to Building Permit issuance?

Yes. Pad certifications and public improvements must be accepted by the Engineering Inspector prior to Building Permit issuance.

How are Public Improvements or Right-of-Way dedications determined?

Public Improvements are located in the public right-of-way and typically consist of All required public improvements shall be designed on a Public Improvement Plan approved by the City and permitted with a Public Improvement Permit.

Informational Guides:

Information about Engineering Inspections:

<https://www.encinitasca.gov/government/departments/engineering/land-development-engineering-inspections>

Activities that Require a Grading Permit:

<https://www.encinitasca.gov/home/showpublisheddocument/11288/638699646926830000>

Land Development Engineering References & Resources:

<https://www.encinitasca.gov/government/departments/engineering/capital-improvement-program/land-development-engineering-references-resources>